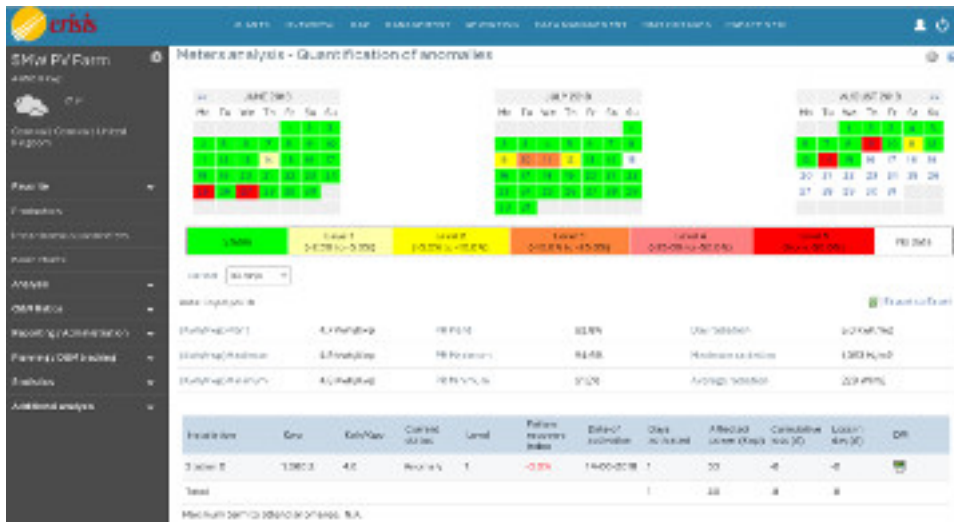


To go or not to go? When to act / When to save?

Sometimes going to the station / roof means a higher cost than real loss of production, which makes it u

Cloud Thinking Solar Management (CTSM) () helps prioritizing decisions about going to the station, t



Benefits:

Example of information for the decision making process:

- Duration of failures (3 days)
- Affected Power (64 Kwp)
- Accumulated Financial Loss (-386€)
- Daily Financial Loss (-140€)
- Maximum deadline for failure attention (1,1 days)